



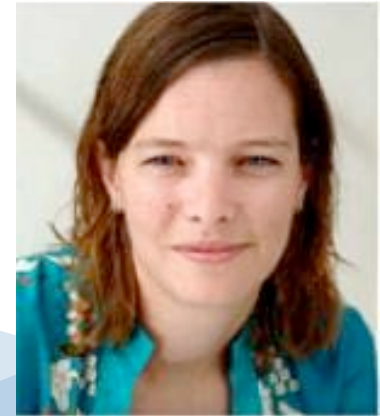
GNSO WG Newcomer Open House Session



Welcome – Meet the GNSO Policy Support Team



David Olive
Vice President, Policy Development
Location: Istanbul, Turkey



Marika Konings
Senior Policy Director and GNSO Team
Leader
Location: Brussels, Belgium

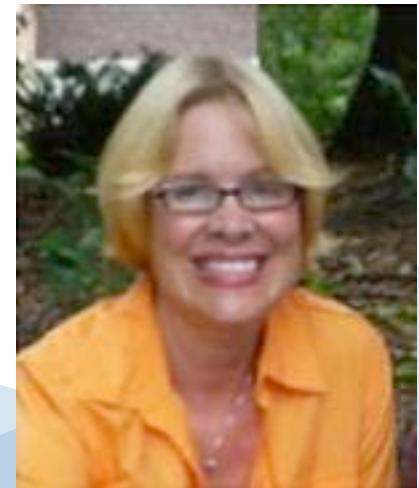


Glen de Saint G ry
GNSO Secretariat
Location: Cannes, France

Welcome – Meet the GNSO Policy Support Team



Mary Wong
Senior Policy Director
Location: New Hampshire, US



Julie Hedlund
Policy Director
Location: Washington DC, US

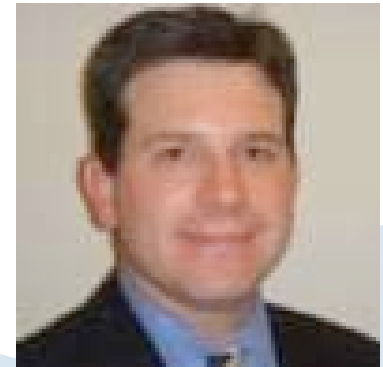


Lars Hoffman
Policy Analyst
Location: Brussels, Belgium

Welcome – Meet the GNSO Policy Support Team



Steven Chan
Sr. Policy Manager
Location: Los Angeles, US



Berry Cobb
Consultant
Location: Scottsdale, US



Nathalie Peregrine
Secretariat Operations Coordinator
Location: Nice, France

Agenda – What do you want to learn more about?



GNSO Policy Development Process



Consensus Policy / Picket Fence



Working Group Guidelines



Mechanics: Wikis / Adobe Connect



Tips & Tricks: Finding Information

Structure

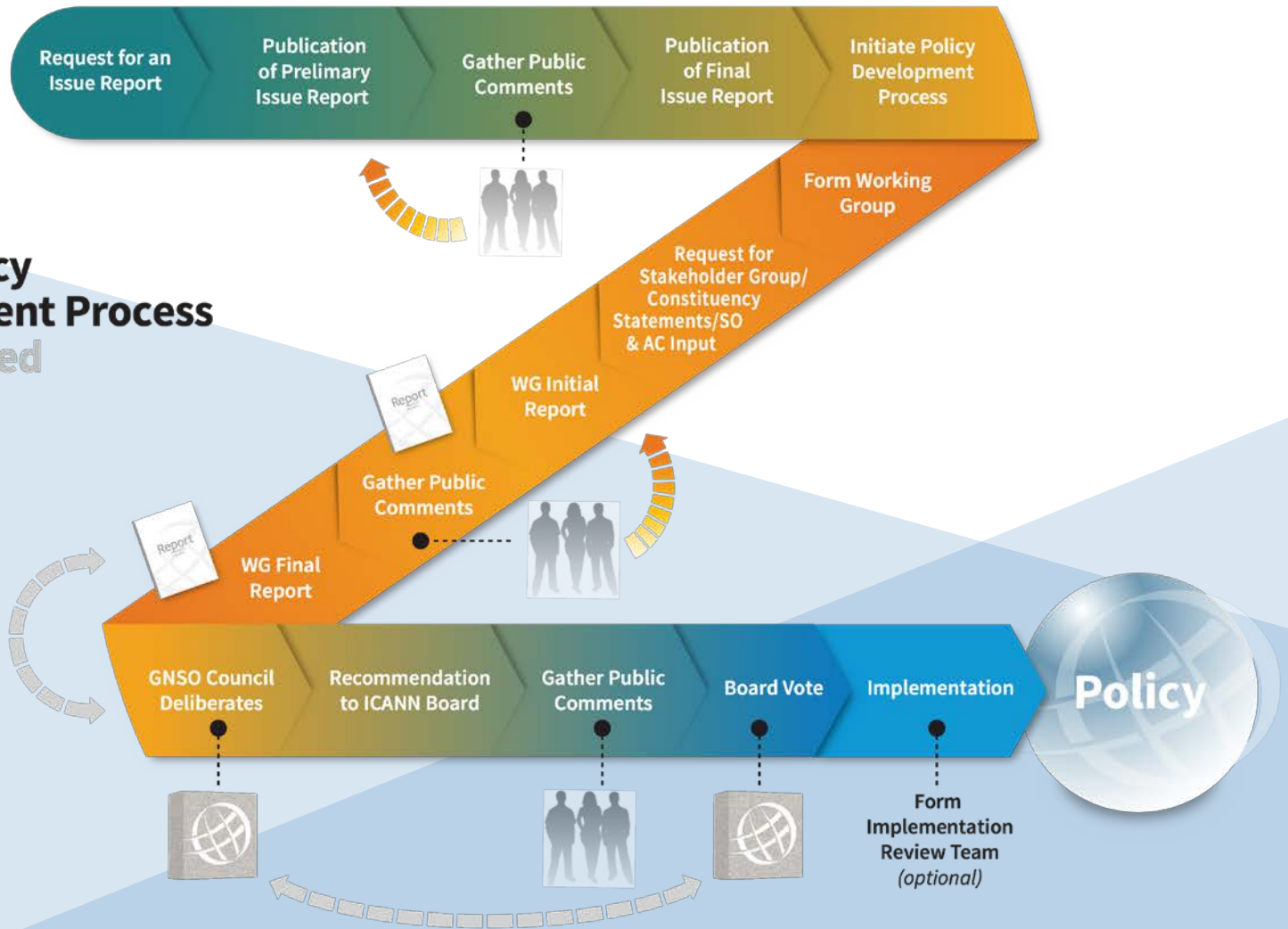




GNSO Policy Development Process

GNSO Policy Development Process *Summarized

*Some steps omitted, for brevity.



- ⦿ Constituency / Stakeholder Group Statements
- ⦿ Formally seek the opinion of other ICANN Advisory Committees and Supporting Organizations early on in the process
- ⦿ Development of Initial Report & Public Comment
- ⦿ Review of Comments
- ⦿ Final Report

- ⦿ Annex A of the ICANN Bylaws - <http://www.icann.org/en/about/governance/bylaws#AnnexA>
- ⦿ PDP Manual - <http://gnso.icann.org/council/annex-2-pdp-manual-16dec11-en.pdf>
- ⦿ PDP Overview - <http://gnso.icann.org/en/basics/consensus-policy/pdp>

A world map where the continents are defined by a complex network of white dots and thin white lines, resembling a social or data network. The background is a solid teal color.

“Consensus Policy” and the Picket Fence

“Consensus Policy”

- ⦿ ICANN-accredited registrars and registries are bound to ICANN by contracts - <http://www.icann.org/en/general/agreements.htm>
- ⦿ In this context, "consensus Policy"* is a specification broadly supported by ICANN stakeholders, and thus could bind registrars and registries

* Need to refer to contracts for specific limitations & need to refer to Bylaws for overall scope issues.

This presentation does not constitute legal advice or a waiver or modification of any ICANN agreement

Background

In its original agreements with ICANN, registries and registrars agreed to comply with “consensus” policies adopted by ICANN provided (i) that such policies did not unreasonably restrain competition and (ii) that the policies related to:

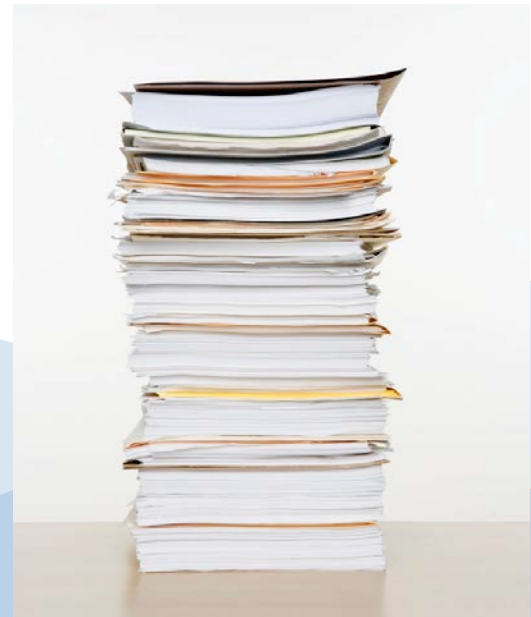
1. Issues for which uniform or coordinated resolution is reasonably necessary to facilitate interoperability, technical reliability and/or stable operation of the Internet or domain-name system;
2. Registry / registrar policies reasonably necessary to implement Consensus Policies relating to registrars/registries
3. Resolution of disputes regarding the registration of domain names (as opposed to the use of such domain names)

Detailed topics subject to “Consensus Policy” are defined in the gTLD Registry and Registrar Agreements



- ⦿ The general policy making authority granted to ICANN to preserve the stability and security of the DNS and the policy authority described in previous slide create a “picket fence” around ICANN’s authority
- ⦿ ICANN could establish policy and/or best practices affecting issues outside the picket fence, but could not mandate registry and registrar compliance with such policies.

⦿ <http://gns0.icann.org/en/basics/consensus-policy/about>



A world map where the continents are defined by a network of white dots connected by thin white lines. The background is a solid orange color. The text "GNSO Working Group Guidelines" is overlaid in white on the left side of the map.

GNSO Working Group Guidelines

- ⦿ The objective of the GNSO Working Group Guidelines is to assist Working Groups to optimize productivity and effectiveness
- ⦿ The main elements of importance to Working Group members covered are:
 - ✓ First meeting of the Working Group
 - ✓ Working Group Member Roles and Responsibilities
 - ✓ Use of sub-teams, briefings and subject matter experts
 - ✓ Participation and Representativeness
 - ✓ Process integrity, Behavior and norms
 - ✓ Standard Methodology for Making Decisions
 - ✓ Appeal process
 - ✓ Communication and collaboration tools
 - ✓ Products & Output



- ⦿ Outlines available designations for WGs to indicate support for policy recommendations
- ⦿ Chair is responsible for determining level of support – iterative process
- ⦿ Current designations: Full consensus, consensus, strong support but significant opposition, divergence, minority view

- ⦿ GNSO Working Group Guidelines Summary - <http://gnso.icann.org/council/summary-gnso-wg-guidelines-06apr11-en.pdf>
- ⦿ GNSO Working Group Guidelines - <http://gnso.icann.org/council/annex-1-gnso-wg-guidelines-07apr11-en.pdf>

A world map where the continents are defined by a complex network of white nodes and connecting lines. The nodes vary in size, and the lines are thin and light blue. The background is a solid dark blue color.

Tips & Tricks

Where to access information

1

GNSO Website: Quick Information box

2

GNSO WIKI : Working Group Workspaces (description, members, reference documents)

3

GNSO Master Calendar: Time & Date of WG calls and Webinars, posting of recordings
and transcripts

- ① <http://gns0.icann.org>
- ② Review core materials such as GNSO Operating Procedures which include GNSO WG Guidelines and PDP Manual
<http://gns0.icann.org/en/council/procedures>
- ③ Review GNSO 101 Materials
<http://gns0.icann.org/en/basics/101>
- ④ Review current GNSO projects (Action Items)
<http://gns0.icann.org/en/group-activities/active>

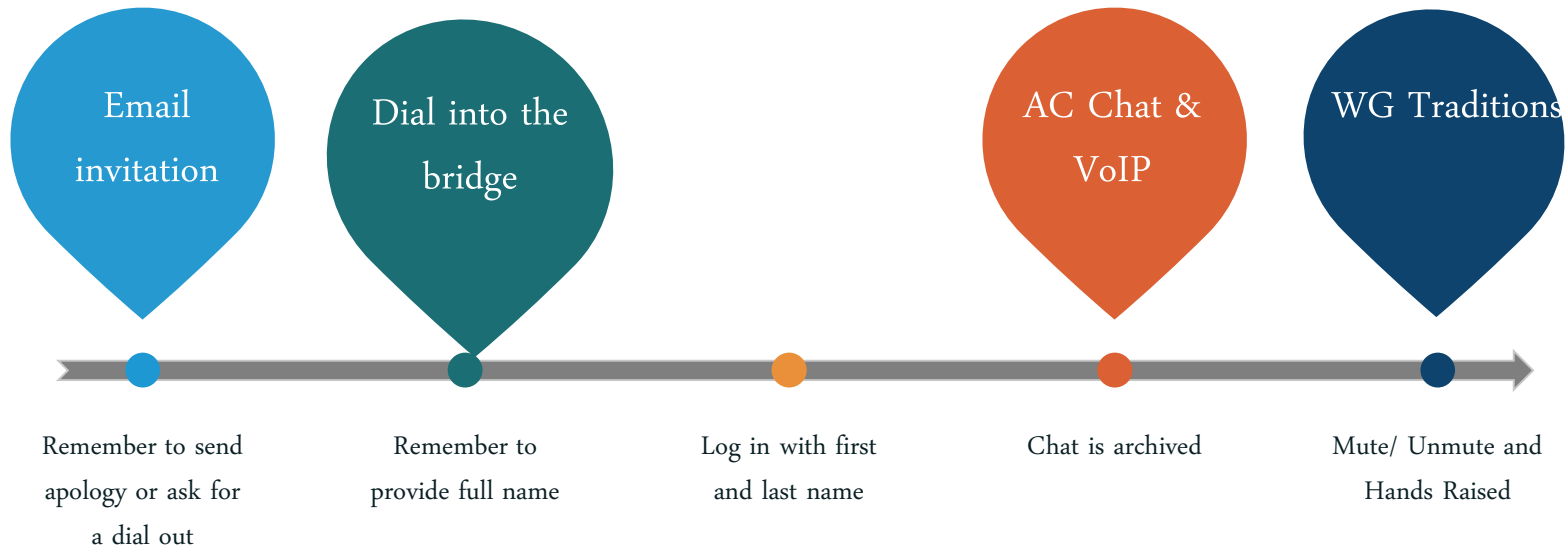
- ① Acronym Helper – see GNSO home page
- ① ICANN Learn - <http://learn.icann.org/>
- ① Find an experienced WG member either from your SG/C to provide guidance / answer questions
- ① Contact the GNSO Policy Staff

Observer: Read only status, no access to conference call information. Access however to post call material on the GNSO Website. Subscribed to the public mailing list of the Working Group only

Member: Subscribed to both public and closed (notify → ntfy) mailing lists.

You can change your status anytime by emailing the GNSO Secretariat.

Joining a WG: Adobe Connect & Conf Calls



How can I get an observer status, or represent the company I work for, within the Working Groups?

What is my ICANN affiliation?

What is my ICANN affiliation?



Thank You!

Reach us at:

Email: gns0-secs@icann.org

Website: gns0.icann.org



twitter.com/icann_gns0



facebook.com/icanngns0