



# At-Large Improvements Work Team D



## *Proposals for the ALAC for*

- *Rec 8 - ALAC may request public comment period be extended to 45 days*
- *Rec 12 - Consumer representatives should have input into decisions and policy advice*
- *Rec 13 - ALAC/At-Large policy advice mechanisms should be strengthened*





# Recommendation 13

Rec. 13.1

Review ALAC's/At-Large's Policy Advice Development processes...

....identifying barriers and measures to reduce such barriers

There was no formal documentation of ALAC's At-Large Policy Advice Development Process

Developed a detailed flowchart of the ALAC/At-Large Policy Advice Development process to better document and understand the steps ALAC and At-Large should take when responding to a policy deadline for comments by 30 calendar days.





# Rec 13 - ALAC/At-Large PAD Process

Rec. 13.1

Review ALAC's/At-Large's Policy Advice Development (PAD) processes...

....identifying barriers and measures to reduce such barriers

- Proposal: Policies should be available in at least English, Spanish and French at the start of the public comment period.
- Proposal: The deadline for public comment on a policy can be longer than 30 days.
- Objective: The timing of when certain steps in the ALAC/At-Large PAD Process should take place should be as flexible as possible to allow At-Large/ALAC the flexibility of following concurrent PAD processes (one for each policy out for comment)





# Rec 13.1 - ALAC/At-Large PAD Process

Rec. 13.1

Review ALAC's/At-Large's Policy Advice Development (PAD) processes...

....identifying barriers and measures to reduce such barriers

- Proposal: ALAC should establish a Policy Review Committee (PRC) to review current and upcoming ICANN policies out for comment as well as policy issues raised by At-Large.
- The ALAC Policy Review Committee will be a standing committee comprising of:
  - ALAC Rapporteur,
  - ALAC liasons to the various ACs / SOs/ cross-constituency WGs
  - at least two representatives from each RALO (not necessarily the RALO chair or secretariat)
- Proposal: RALOs would poll/encourage ALSes at monthly RALO conference calls and electronic communication (emails, polls, etc) to voice any policy issues/concerns by ALSes.





# Recommendation 8

## Rec. 8.1.1

Develop process for requesting extended consultation window

## Rec 8.2.1

Develop process for implementing extension requests received.

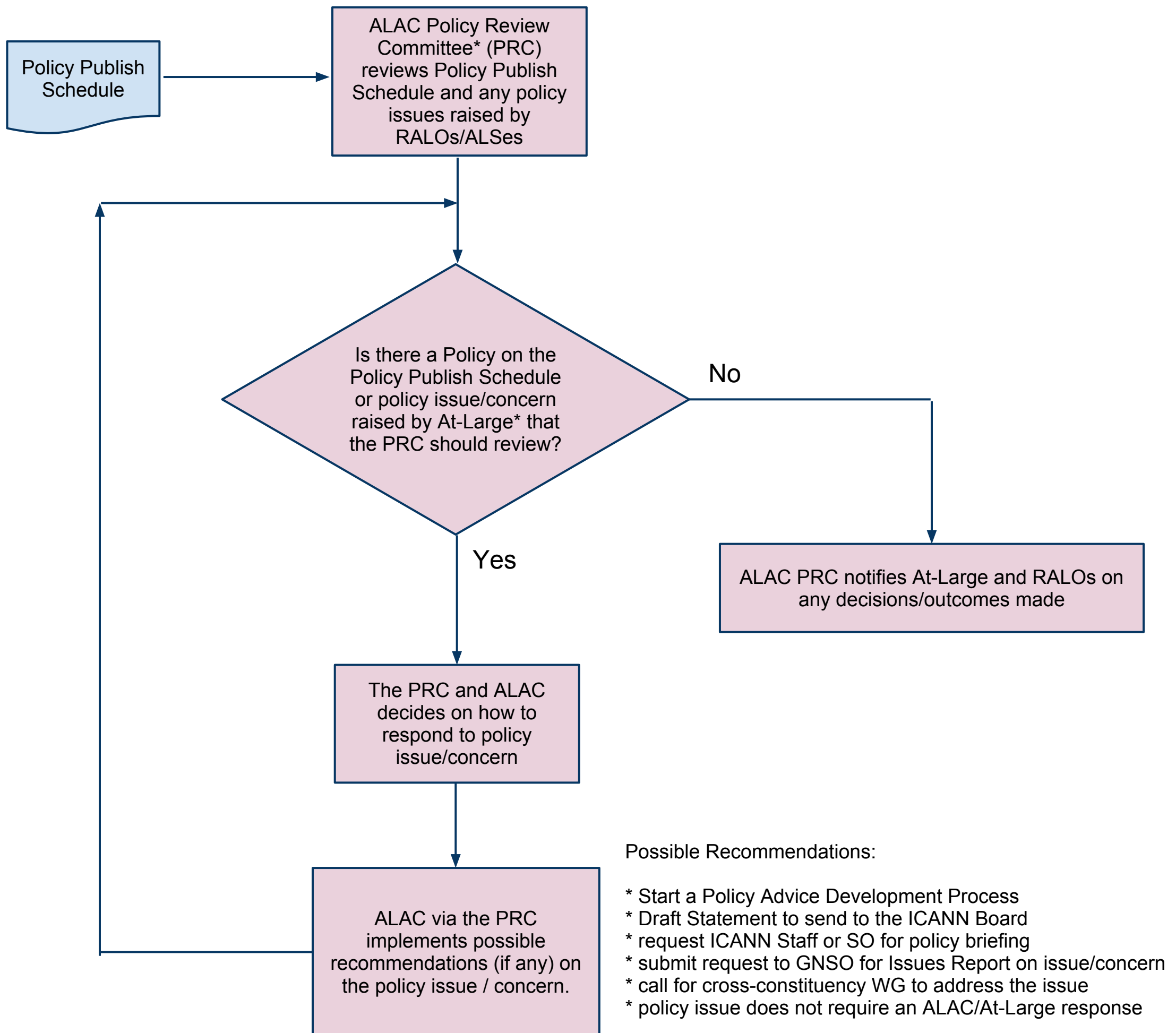
## Rec. 8.3.1

Review activities in advance of the beginning of the public comment period.

- Proposal: Requested extension can be for any number of days, determined by ALAC.
- Proposal: ALAC be able to request extension at various stages of the PAD.
- Proposal: ICANN Staff "Team" establish and maintain a "Policy Publish Schedule" (PPS). Each entry in the PPS should have the policy name, an excerpt of what the policy is about, the SO responsible and a tentative date for completion (before translation)
- Proposal: The ICANN Staff "Team" can comprise the ICANN staff persons assigned to the various AC/SOs and the Language Services Manager to plan for needed policy translations.
- ALAC & PRC use PPS to track scheduling and to decide on policy statements early.

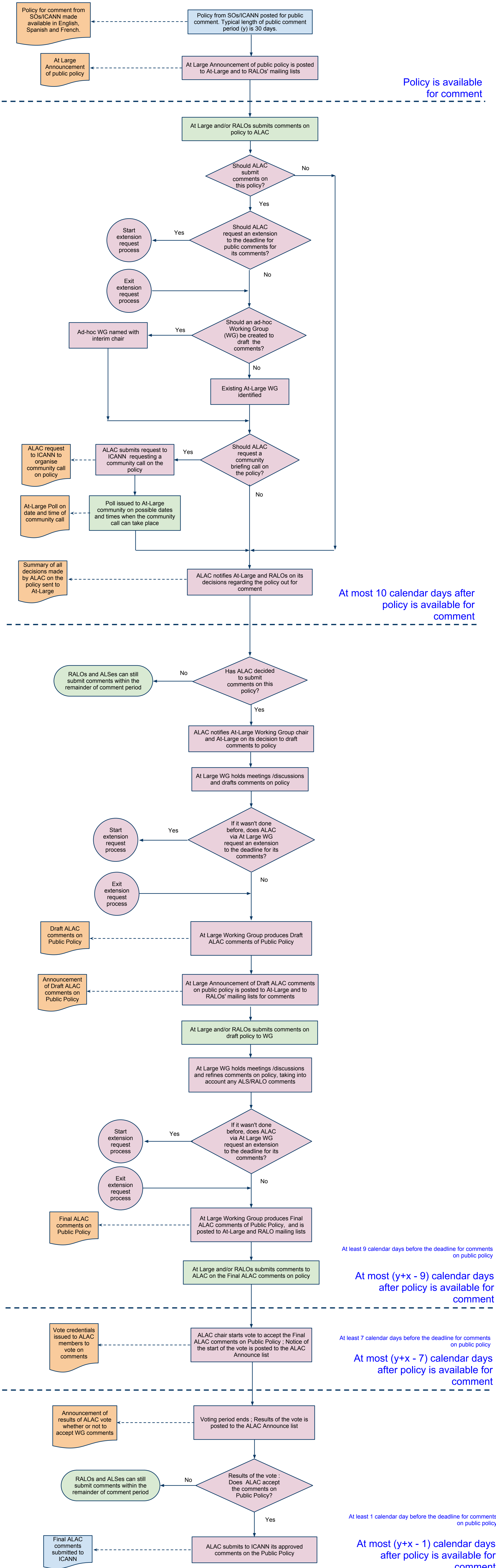


# At-Large/ALAC Policy Review Committee



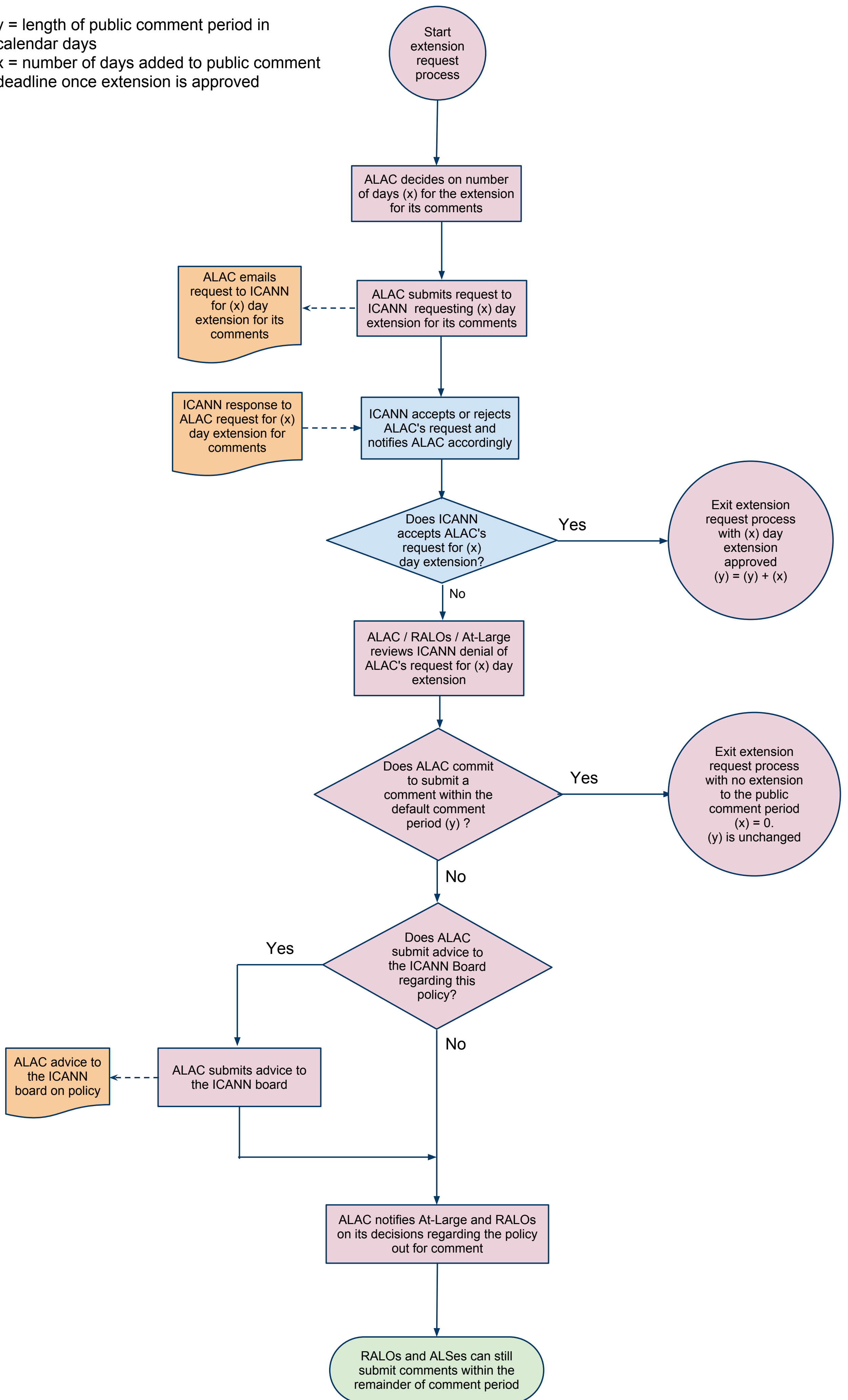
# ALAC / At- Large Policy Advice Development Flowchart

y = length of public comment period in calendar days  
 x = number of days added to public comment deadline once extension is approved



# How ALAC may request public comment period be extended for (x) number of days

y = length of public comment period in calendar days  
 x = number of days added to public comment deadline once extension is approved





# Recommendation 13.2



Rec. 13.2

Strengthen policy-development processes within the SOs and ACs (GNSO, ccNSO, ASO) for requesting and considering ALAC input

GNSO :

- ALAC non-voting liaison to the GNSO. ALAC reps can join GNSO WGs.

ccNSO:

- ALAC liaison to the ccNSO ; ccNSO liaison to the ALAC. The [ccNSO Review Final Report](#) contains several recommendations (1,5,6,12) which are of relevance to Rec 13.2

ASO:

- No liaisons, but the Regional Internet Registries (RIRs) allow for participation in their policy development processes (PDP). Thus, participation by RALOs and ALSes in the RIR's PDP should be encouraged.





# Proposals for Rec. 12

Rec. 12

Outreach related to  
Consumer representatives and At-  
Large and  
Consumer representatives to GNSO

Proposal: create an consumer outreach document for use by At-Large in their outreach efforts to get consumer organisations involved in ICANN.

A [3rd draft of the consumer outreach document](#) has been produced.





# At-Large WT D Members

Thank You!

Questions?

Comments?

AFRALO	Dave Kissoondoyal
APRALO	Cheryl Langdon-Orr Hong Xue Charles Mok
EURALO	Rudi Vansnick (co-chair) Olivier MJ Crepin-Leblond Jean-Jacques Subrenat
LACRALO	Dev Anand Teelucksingh (co-chair) Antonio Medina Gomez Carlos Vera
NARALO	Beau Brendler Chris Grunderman

